

STANDARD SIZES PPS MEDIA				
Ø / T	200	400	Qty spokes	Ø Center plate [mm]
2190	X	X	8	460
2450	X	X	8	460
2600	X	X	8	460
2700	X	X	8	460
2800	X	X	8	460
2900	X	X	8	460

More diameters are available on quote bases. Ask ProFlute representatives for more info.

### AVAILABLE OPTIONS

Available metal types:

- 1) Galvanized / Electro plated
- 2) Stainless steel (1.4301 or similar)

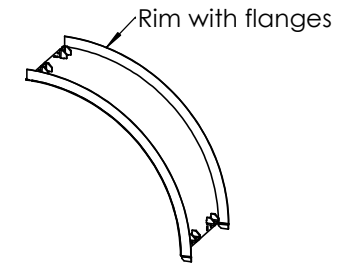
Available bearing types:

- 1) Ball bearings
- 2) Slider bearing / bushing

Available media

- 1) PPS - Silica gel
- 2) PPX - Silica gel
- 3) PPP - Zeolite
- 4) PPC - Silica gel + activated carbon

Available with 50 mm flange

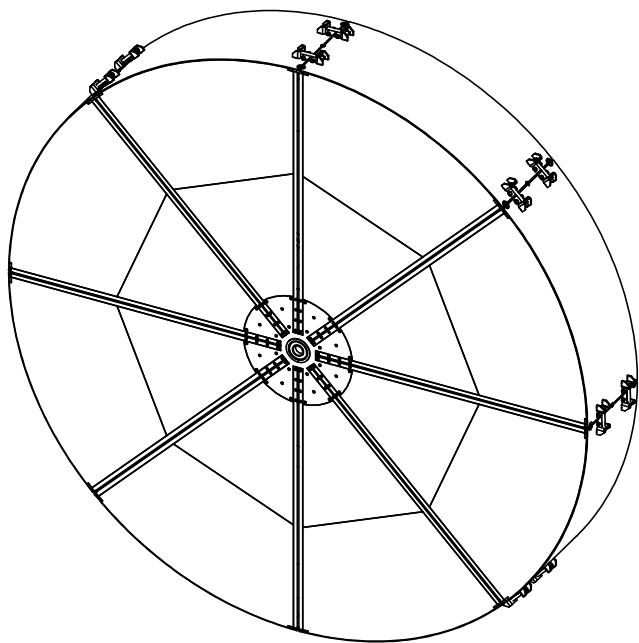


Visualization of sizes and choices within the design family

Description			
Ø 2000-2950 - Sectored rotors			
Tolerances, if not indicated, according to:			Sheet 1 / 2
Revision			.
<b>ProFlute</b> Technology leader	Design by	Drawing No	
	Design. ckd		
-	-		

### Aproximate packing and weight per rotor

Rotor	BOX SIZE ASSEMBLED ROTOR [CM]	WEIGHT ASSEMBLED ROTOR [KG]	METAL PARTS Box size [cm]	WEIGHT OF METAL PARTS INC PALLET [KG]	MEDIA PALLET 1 [CM]	WEIGHT OF MEDIA INC PALLET [KG]	MEDIA PALLET 2 [CM]	APPROXIMATE MEDIA WEIGHT PALLET 2 [KG]	APPROXIMATE TOTAL GROSS WEIGHT [KG]	TOTAL NUMBER OF PALLETS PER ROTOR
2190X200	237x237x42	500							500	1
2190X400	237x237x64	700							700	1
2450X200			161x106x64	190	161x161x64	340			530	2
2450X400			161x106x64	315	161x161x64	340	161x161x64	340	870	3
2600X200			161x106x64	205	161x161x64	340			545	2
2600X400			161x106x64	330	161x161x64	340	161x161x64	340	1010	3
2700X200			161x106x64	215	161x161x64	360			575	2
2700X400			161x106x64	340	161x161x64	360	161x161x64	360	1060	3
2900X200			161x106x64	220	161x161x64	420			640	2
2900X400			161x106x64	350	161x161x64	420	161x161x64	420	1190	3



RoHS Compliant

--

Description		Sheet		Revision	
Ø 2000-2950 - Sectored rotors		2 / 2		.	
Tolerances, if not indicated, according to: SS-ISO 2768-1		Drawing No			
<b>ProFlute</b> Technology leader		Design by			
		Design. ckd			
		-			